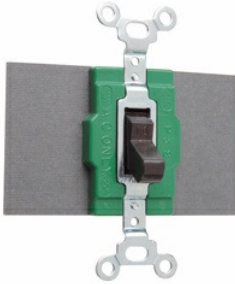




Pass and Seymour
30A Single Pole Double Throw Switch, Brown
Part No. 1227

Single-Pole, Double-Throw Switch, 30A, 120/277V.



Features & Benefits

Oversize silver alloy contacts for long life and better heat dissipation.

Side wired terminals accept #14 - #10 AWG copper or copper-clad conductors.

Fiber terminal insulation barriers standard.

Can be mounted in standard device boxes or in NEMA 1 sheet steel enclosures.

Bodies, covers, and toggles molded of durable nylon.

Single Pole-Double Throw and Double Pole-Double Throw.

Locking Switches supplied with one 1498-NT key.

Normally open.

For covering patents, see <https://www.legrand.us/patents>.

For compatible wall plate options, from our TradeMaster unbreakable plates to our radiant screwless plates to our metal wall plates, visit www.legrand.us/electrical-wiring-devices/wall-plates.

Specifications

General Info

Product Line	Pass & Seymour	Color	Brown
Country Of Origin	Mexico	Standard	UL Listed

Dimensions

Product Width US	1.5 in	Product Depth US	1.469 in
Product Height US	3.281 in		

Listing Agencies / 3rd Party Agencies

CSA Listed

Yes

cULus Listed

Yes

CSA File Number

17949

Technical Information

Amperage

30 A

Wattage

1 W

Voltage

120.0 V
