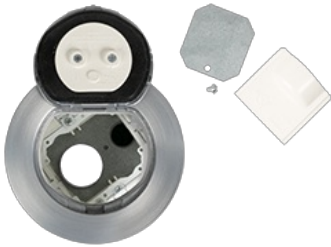




Wiremold  
4IN UNWIRED PT ASSEMBLY AA  
Part No. 4ATCAA



Designed for retrofit and new construction, Evolution Series 4" Poke-Thru devices provide convenient access to power, communications, and audio/video services recessed below floor level - providing maximum device protection. Two gangs of capacity allow you to configure services for the needs of your space. Evolution Series 4" Poke-Thru devices are the perfect fit for kiosks, training rooms, classrooms, healthcare facilities or commercial buildings with open-space architecture.

## Features & Benefits

All Evolution Series Poke-Thru Devices, like every Wiremold Poke-Thru Device, meet and exceed UL scrub water exclusion requirements for tile, carpet, and wood covered floors.

## Specifications

### General Info

Product Line	Wiremold	UPC Number	786564090625
Country Of Origin	United States	Construction	Assembled
Number of Knockouts	3	Application Sector	Commercial
Standard	cULus Listed Metallic Outlet Boxes: File E2961 Guide QCIT Meets Article 314.27(C) of NEC.	Type	Poke-Thru

### Dimensions

Product Width US	5.5 in	Product Height US	18.562 in
Cubic Capacity	1429.31 cu in		

### Listing Agencies / 3rd Party Agencies

cULus ListingNumber	E2961	cULus Listed	Yes
---------------------	-------	--------------	-----

---

## Buy American Act Compliance

---

NAFTA Yes

---

## Additional Information

---

RoHS Conformant Yes

---

## Technical Information

---

Cable Entry	Knockouts	Number of Outlets	2
-------------	-----------	-------------------	---

---