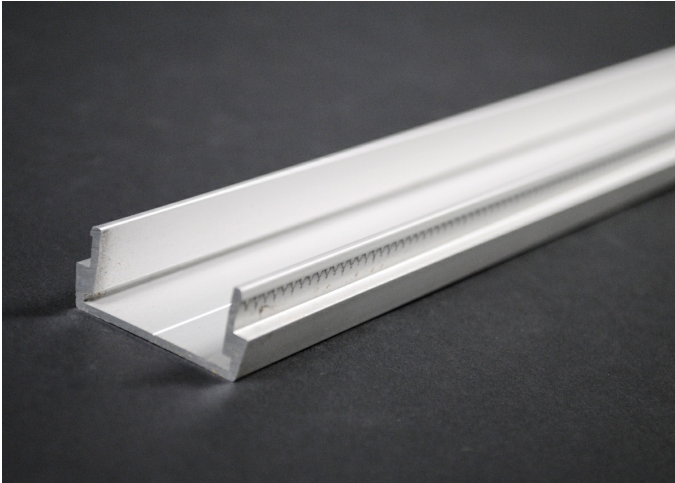




Wiremold
AL2000 Raceway Base
Part No. AL2000B-5



1 7/16" (37mm) wide, 6063-T5 extruded aluminum, satin anodized finish, .60" (1.5mm) nominal thickness. Base packed (12) 5' (1.5m) lengths per carton.

Features & Benefits

1 7/16" (37mm) wide, 6063-T5 extruded aluminum, satin anodized finish, .60" (1.5mm) nominal thickness. Base packed (12) 5' (1.5m) lengths per carton.

Specifications

General Info

Product Line	Wiremold	UPC Number	786776038781
Country Of Origin	United States	Application Sector	Commercial

Standard	cULus Listed Raceway: File E4376 Guide RJPR. Fittings: File E41751 Guide RJPR. Raceway & Fittings: Meet Article 386 of NEC. Multioutlet Assemblies: Meet Article 380 of NEC. cULus Listed Raceway: File E4376 Guide RJBT. Multioutlet Assemblies: File E15191 Guide PVGT. Fittings: File E41751 Guide RJPR. Base & Blank Cover: Meets Article 386 of NEC. Plugmold Strips: Meets Article 380 of NEC.	Type	Plugmold
----------	--	------	----------

Listing Agencies / 3rd Party Agencies

cULus ListingNumber	E4376	cULus Listed	Yes
---------------------	-------	--------------	-----

Buy American Act Compliance

NAFTA	Yes
-------	-----

Additional Information

RoHS Conformant	Yes	Product Environmental Profile	Yes
-----------------	-----	-------------------------------	-----

Technical Information

Amperage	15 A	Enclosure Type	Aluminum
----------	------	----------------	----------

Voltage	120.0 V	Environmental Conditions	Dry interior locations
---------	---------	--------------------------	------------------------
