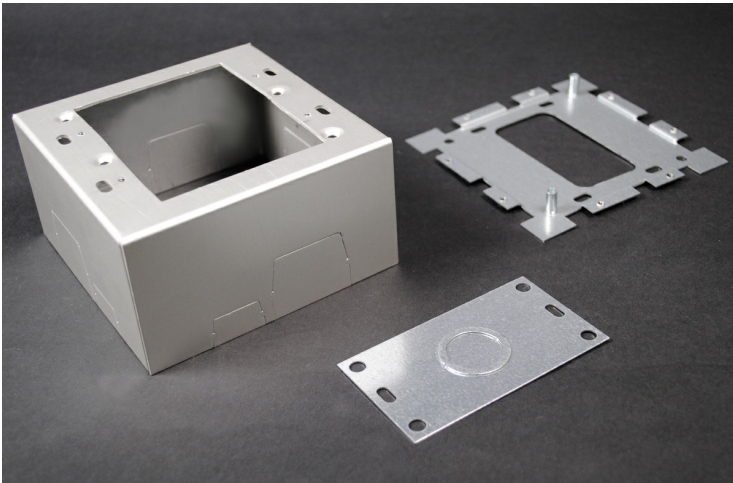




Wiremold
AL2000 Deep Device Box
Part No. AL2044-2



Two Gang Deep Device Box. For larger receptacles and deep devices such as those of signal and alarm systems. Base has open black plate for mounting to existing wall box and solid black plate insert with 1/2" and 3/4" trade size Kos to close opening. Accepts industry standard faceplates for communication devices. Aluminum

Features & Benefits

Two Gang Deep Device Box. For larger receptacles and deep devices such as those of signal and alarm systems. Base has open black plate for mounting to existing wall box and solid black plate insert with 1/2" and 3/4" trade size Kos to close opening. Accepts industry standard faceplates for communication devices. Aluminum

Specifications

General Info

Product Line	Wiremold	UPC Number	786776044096
--------------	----------	------------	--------------

Country Of Origin	United States	Number of Receptacles	36
-------------------	---------------	-----------------------	----

Application Sector	Commercial	Standard	cULus Listed Raceway: File E4376 Guide RJPR. Fittings: File E41751 Guide RJPR. Raceway & Fittings: Meet Article 386 of NEC. Multioutlet Assemblies: Meet Article 380 of NEC. cULus Listed Raceway: File E4376 Guide RJBT. Multioutlet Assemblies: File E15191 Guide PVGT. Fittings: File E41751 Guide RJPR. Base & Blank Cover: Meets Article 386 of NEC. Plugmold Strips: Meets Article 380 of NEC.
--------------------	------------	----------	--

Type	Plugmold
------	----------

Dimensions

Product Width US	4.763 in	Product Depth US	2.5 in
Product Length US	4.763 in		

Listing Agencies / 3rd Party Agencies

cULus ListingNumber	E41751	cULus Listed	Yes
---------------------	--------	--------------	-----

Buy American Act Compliance

NAFTA	Yes
-------	-----

Additional Information

RoHS Conformant	Yes	Product Environmental Profile	Yes
-----------------	-----	-------------------------------	-----

Technical Information

Amperage	15 A	Enclosure Type	Aluminum
Voltage	120.0 V	Environmental Conditions	Dry interior locations
