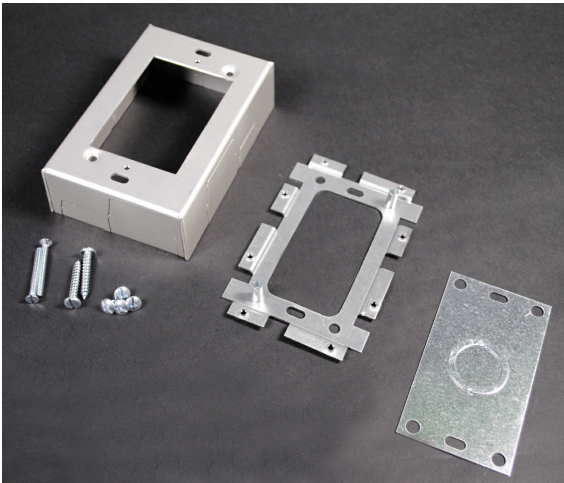




Wiremold
AL2000 Shallow Switch and Receptacle Box
Part No. AL2047



Single Gang Shallow Device Box. Designed for standard shallow switches and receptacles. Base has open back plate for mounting to existing wall box and solid black plate insert with 1/2" and 3/4" trade size Kos to close opening.

Features & Benefits

Single Gang Shallow Device Box. Designed for standard shallow switches and receptacles. Base has open back plate for mounting to existing wall box and solid black plate insert with 1/2" and 3/4" trade size Kos to close opening.

Specifications

General Info

Product Line	Wiremold	UPC Number	786776039009
Country Of Origin	United States	Application Sector	Commercial

Standard	cULus Listed Raceway: File E4376 Guide RJPR. Fittings: File E41751 Guide RJPR. Raceway & Fittings: Meet Article 386 of NEC. Multioutlet Assemblies: Meet Article 380 of NEC. cULus Listed Raceway: File E4376 Guide RJBT. Multioutlet Assemblies: File E15191 Guide PVGT. Fittings: File E41751 Guide RJPR. Base & Blank Cover: Meets Article 386 of NEC. Plugmold Strips: Meets Article 380 of NEC.	Type	Plugmold
----------	--	------	----------

Dimensions

Product Width US	3.063 in	Product Depth US	1.375 in
Product Length US	3.063 in		

Listing Agencies / 3rd Party Agencies

cULus ListingNumber	E41751	cULus Listed	Yes
---------------------	--------	--------------	-----

Buy American Act Compliance

NAFTA	Yes
-------	-----

Additional Information

RoHS Conformant	Yes	Product Environmental Profile	Yes
-----------------	-----	-------------------------------	-----

Technical Information

Amperage	15 A	Enclosure Type	Aluminum
----------	------	----------------	----------

Voltage	120.0 V	Environmental Conditions	Dry interior locations
---------	---------	--------------------------	------------------------
