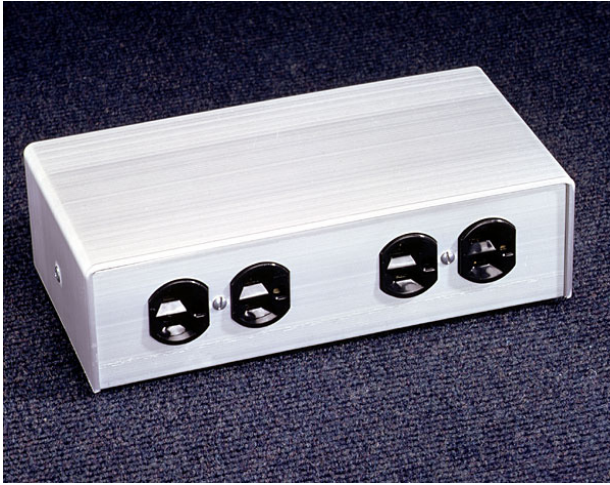




**Wiremold**  
**FIT Multi-Service Poke-Thru Device**  
Part No. FIT



Pedestal Style Poke-Thru Devices from Legrand are an ideal solution for bringing large capacity power and communication services to workstations in an open space, above-grade floor environment. Every Pedestal Poke-Thru Device from Legrand comes with built-in TopGuard protection, an industry-leading design that meets and exceeds UL scrub water exclusion requirements for tile and carpet floors. Topguard protection prevents water, dirt, or debris from entering the power and communication compartments located below the floor, through the service head or floor fittings. All Pedestal Poke-Thru Devices from Legrand can be installed on tile, carpet, or wood covered floors. Each of these devices provides an excellent solution for both new or retrofit construction, with typical applications that include commercial office buildings, financial institutions, and government facilities.

## Features & Benefits

Allows greater flexibility and capacity to meet customer power and communication requirements. Lowers installed cost.

Dual and/or triple service capacity. Flexibility to meet changing service r

## Specifications

### General Info

Product Line	Wiremold	UPC Number	786564162414
--------------	----------	------------	--------------

Country Of Origin	United States	Construction	Not Assembled
-------------------	---------------	--------------	---------------

Application Sector	Residential/Commercial	Standard	cULus Listed Metallic Outlet Boxes: File E2961 Guide QCIT, cULus Listed Nonmetallic Outlet Boxes & Fittings Classified for Fire Resistance: File R8209 Guide CEYY Meets Article 300.21 300.22[C] &314 of NEC
--------------------	------------------------	----------	--

Type	Poke-Thru
------	-----------

### Listing Agencies / 3rd Party Agencies

cULus ListingNumber	E2961	cULus Listed	Yes
---------------------	-------	--------------	-----

### Buy American Act Compliance

---

NAFTA	Yes
-------	-----

---

#### Additional Information

---

RoHS Conformant	Yes	Product Environmental Profile	Yes
-----------------	-----	-------------------------------	-----

---