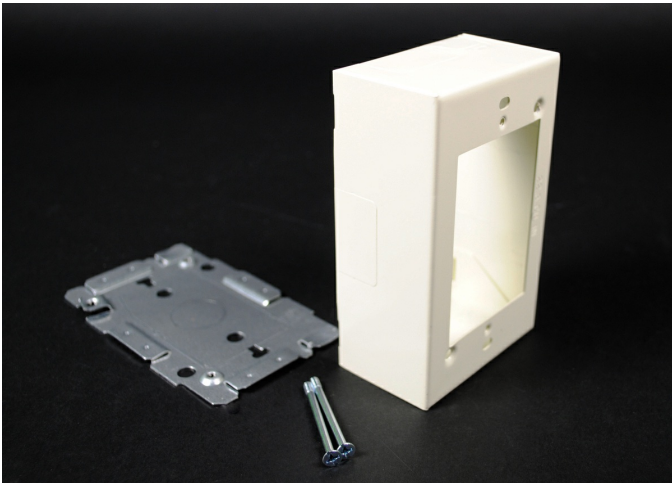




Wiremold
2000 Single-Gang Device Box Fitting
Part No. G2048



Single Gang Device Box. Cover has twistouts for 2000, 500 and 700 Series Raceways. Base has 1/2" trade size KO and rectangular KO for extension to wall box. Base has #10 threaded hole for ground connection.

Features & Benefits

Single Gang Device Box. Cover has twistouts for 2000, 500 and 700 Series Raceways. Base has 1/2" trade size KO and rectangular KO for extension to wall box. Base has #10 threaded hole for ground connection.

Specifications

General Info

| | | | |
|--------------|--------------|-------------------------|---------------|
| Product Line | Wiremold | Replaced by Part Number | CG2048 |
| UPC Number | 786776037456 | Country Of Origin | United States |

| | | | |
|--------------------|------------|----------|---|
| Application Sector | Commercial | Standard | cULus Listed Base & Blank Cover: File E4376 Guide RJBT. Multioutlet Assemblies: File E15191 Guide PVGT. Fittings: File E41751 Guide RJPR. Base & Blank Cover & Plugmold Series w/Snapicoil Haarness: Meets Article 386 of NEC. Meets Section 12-3032 of CEC. cULus Listed Raceway: File E4376 Guide RJBT. Fittings: File E41751 Guide RJPR. Base & Black Cover: Meets Article 386 of NEC. Meets Section 12-600 of CEC. |
|--------------------|------------|----------|---|

| | |
|------|----------|
| Type | Plugmold |
|------|----------|

Dimensions

| | | | |
|-------------------|----------|------------------|---------|
| Product Width US | 2.875 in | Product Depth US | 1.75 in |
| Product Length US | 2.875 in | | |

Buy American Act Compliance

| | |
|-------|-----|
| NAFTA | Yes |
|-------|-----|

Additional Information

| | | | |
|-----------------|-----|-------------------------------|-----|
| RoHS Conformant | Yes | Product Environmental Profile | Yes |
|-----------------|-----|-------------------------------|-----|

Technical Information

| | | | |
|----------|---------|--------------------------|------------------------|
| Amperage | 15 A | Enclosure Type | Steel |
| Voltage | 125.0 V | Environmental Conditions | Dry interior locations |
