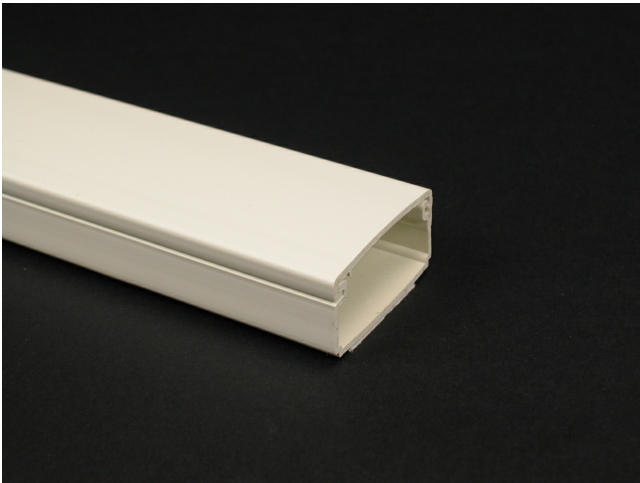




Wiremold  
Eclipse PN03 Latching Raceway Fitting  
Part No. PN03L08V



PN3 Series One-piece latching raceway with co-extruded hinge and adhesive backing. Available in 8' (2.44m) lengths.

## Features & Benefits

PN3 Series One-piece latching raceway with co-extruded hinge and adhesive backing. Available in 8' (2.44m) lengths.

## Specifications

### General Info

Product Line	Wiremold	UPC Number	786776015430
Country Of Origin	United States	Application Sector	Residential/Commercial

Standard	cULus Listed Raceway: File E90378 Guide RJTX. Complies with flammability requirements of UL-5A. Fittings: File E90377 Guide RJYT. Meets Article 388 of NEC. UL Listed for up to 600V. Meets Section 12-2600 of CEC.	Type	Raceway
----------	---------------------------------------------------------------------------------------------------------------------------------------------------------------------------------------------------------------------	------	---------

### Dimensions

Product Width US	0.812 in	Product Height US	0.5 in
Product Length US	94.488 in		

### Listing Agencies / 3rd Party Agencies

cULus ListingNumber	E90378	cULus Listed	Yes
---------------------	--------	--------------	-----

---

## Buy American Act Compliance

---

NAFTA Yes

---

## Additional Information

---

RoHS Conformant Yes Product Environmental Profile Yes

---

## Technical Information

---

Voltage 600.0 V

---